

HOUSE & LAND PACKAGE

\$380,000 *

*After Govt First Home Buyers Rebate \$15,000



Picture shown is indicative only



Murray



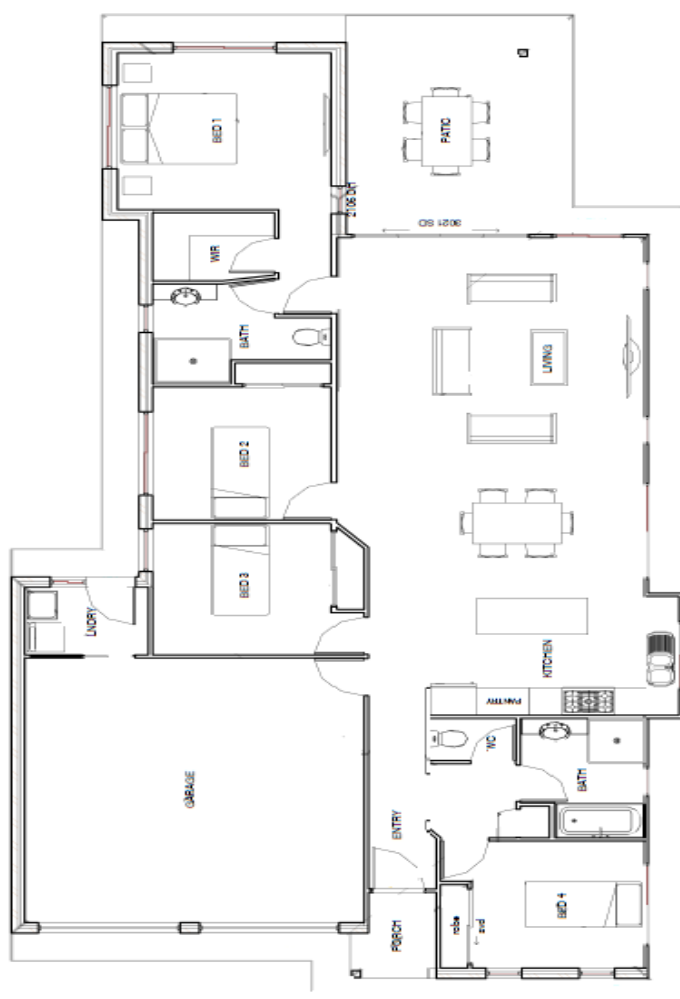
4



2



2



12 Fitzpatrick St,
Walkerston
Land Size: 488 m2
Home Size: 187m2



Inclusions

- ✓ Colourbond Roof, Fascia, Gutters
- ✓ Exposed Aggregate Driveway & Paths
- ✓ Air-Conditioning to Living & Bed 1
- ✓ Built-In Robes to all Bedrooms
- ✓ Master Bedroom with Ensuite & WIR
- ✓ Open Plan Living Area
- ✓ Vinyl To Living Areas
- ✓ Carpet to Bedrooms
- ✓ Large well kitchen with plenty of storage
- ✓ All weather access from double garage
- ✓ Approved 6 Star Energy Efficiency Rating

To find out more call 0417 404 464
or visit www.palmviewhomes.com.au

Now it's **MyTime**

Disclaimer: Palmbild Pty Ltd T/As Palmview Homes reserves the right to make changes or improvements to plans, specifications, and prices without notice. All drawings and photography are for illustrative purposes only. Contract documentation will take precedence over any information or marketing brochure. All plans are copyright to Palmview Homes and must not be used or reproduced in whole or part without written permission.*Available grant is \$15,000 for eligible customers. The FHOG is administered by the QLD State Government. Visit osr.qld.gov.au to see if you qualify.